



WWF®

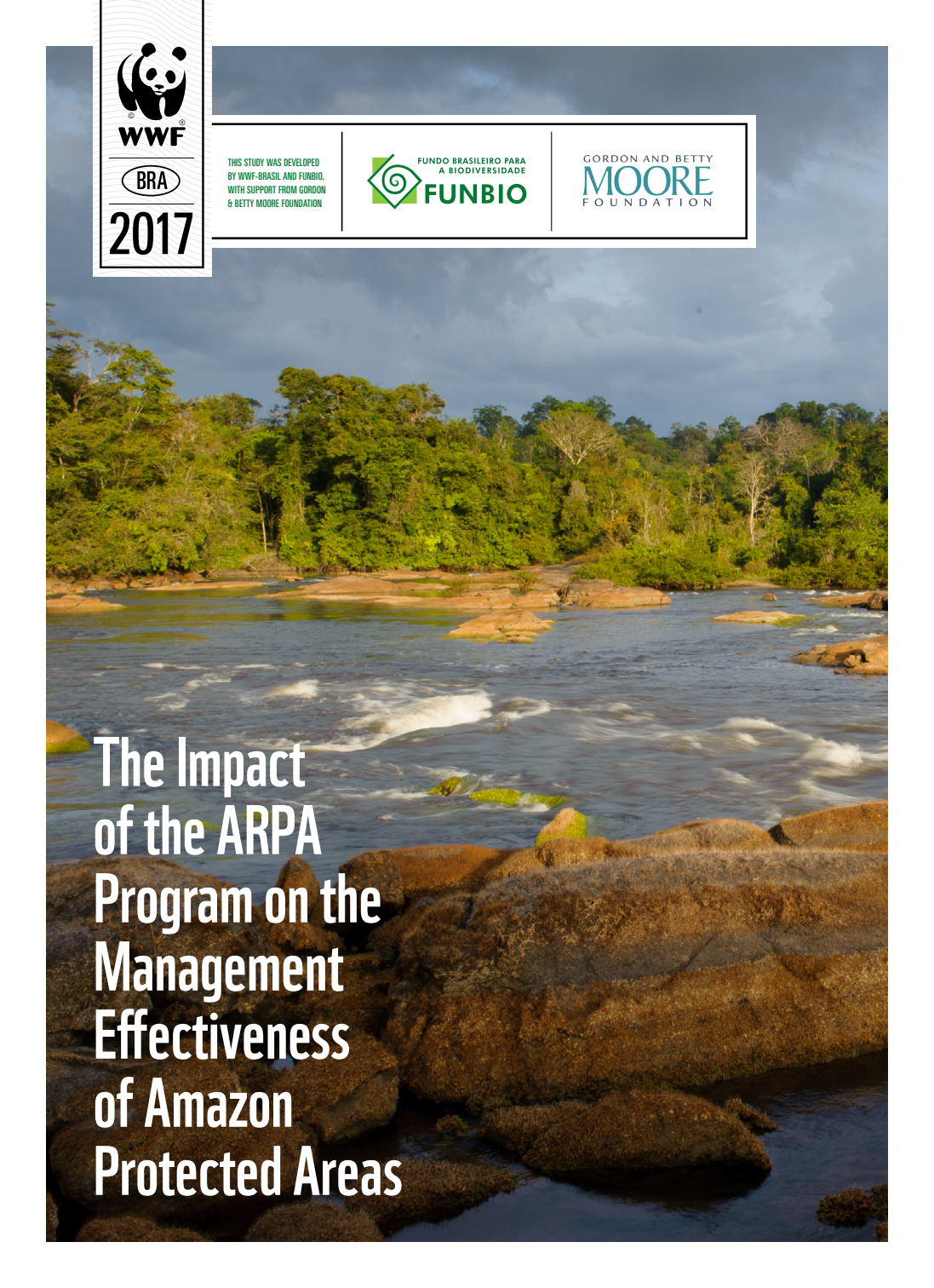
BRA

2017

THIS STUDY WAS DEVELOPED
BY WWF-BRASIL AND FUNBIO,
WITH SUPPORT FROM GORDON
& BETTY MOORE FOUNDATION



GORDON AND BETTY
MOORE
FOUNDATION



The Impact of the ARPA Program on the Management Effectiveness of Amazon Protected Areas

HOW IS BRAZIL CONTRIBUTING TO GLOBAL CONSERVATION EFFORTS?

Brazil accounted for **74%** of the total area protected in the world between 2003 and 2008. In the Amazon alone, **176** protected areas have been created since 2000, a total of **70,5 million** hectares.

As a result, the country has been contributing to the achievement of one of the Aichi Biodiversity Targets. By adopting to these goals, Brazil defined that 30% of the Amazon should be covered by protected areas.

In this context, the Amazon Protected Areas Program (ARPA), created in 2002 by the Federal Government, coordinated by the Environmental Ministry and implemented in partnership with state agencies, private institutions and civil society, stands out.

WHAT IS THE ARPA PROGRAM?

The Amazon Protected Areas Program (ARPA) is the world's largest conservation and sustainability initiative on tropical forests, and represents the main biodiversity conservation strategy for the Amazon biome.



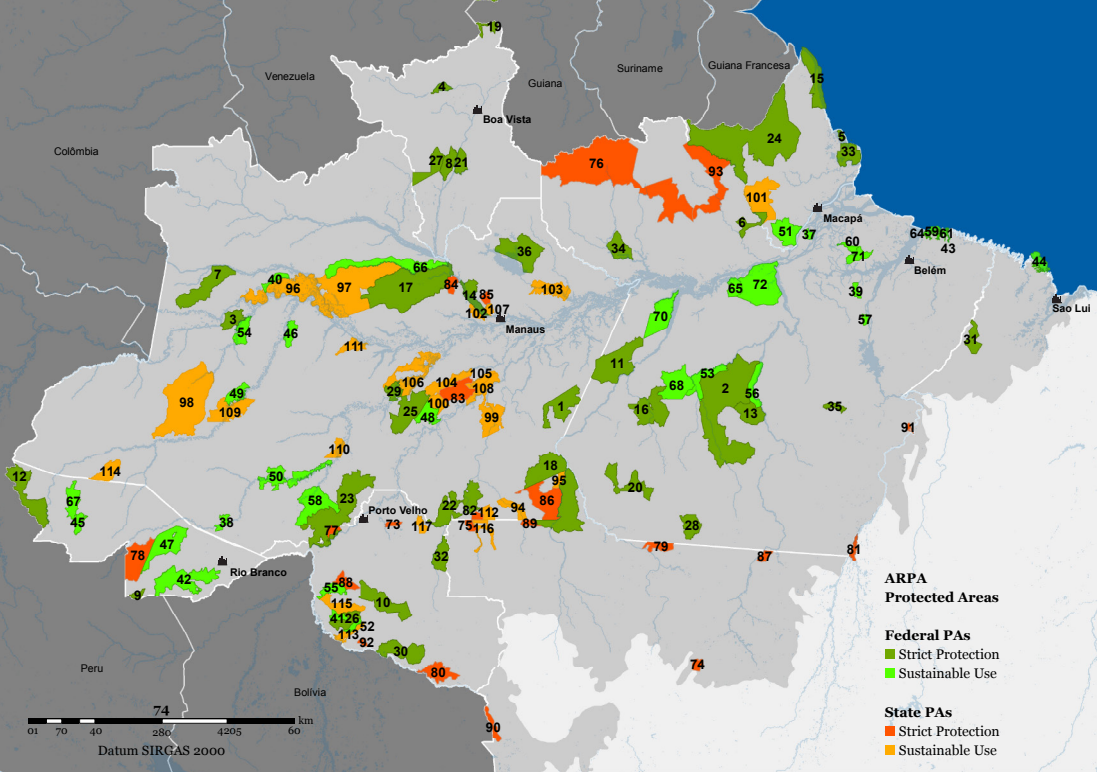
ARPA HAS BECOME AN INTERNATIONALLY ACKNOWLEDGED STATE POLICY. DO YOU KNOW ITS ORIGIN?

The story goes back to 1998, with the establishment of an alliance between the World Wide Fund for Nature - WWF and the World Bank. The goal was to protect Amazon biodiversity and to face the increasing deforestation threats through the creation of a network of protected areas.

The program was initially structured with donations from external agencies (GEF, German government, WWF), financial and operational management of the Brazilian Biodiversity Fund (Funbio) and technical partnership with GTZ (currently GiZ).

HOW DOES ARPA WORK?

Through an innovative operational arrangement, it links public and private entities, including donors, the Ministry of the Environment, Funbio and executing agencies. Its activities, which are carried out in 3 stages (2003-2010, 2010-2017 and 2014-2039), are focused on 5 of the 12 categories of protected areas: Parks, Biological Reserves, Ecological Stations, Extractive Reserves and Sustainable Development Reserves. The program supports the creation, consolidation and maintenance of protected areas.



The ARPA Program currently covers 60.8 million hectares distributed in 117 protected areas, including 72 federal PAs and 45 state PAs – located in nine Brazilian states (Acre, Amapá, Amazonas, Maranhão, Mato Grosso, Pará, Rondônia, Roraima and Tocantins).

HOW DO WE KNOW IF THE PROGRAM IS EFFECTIVE?

The success of protected areas as conservation tools is based on the assumption that they are created and managed to protect their values (biological,

RAPPAM HAS BEEN APPLIED 2,276 TIMES IN ABOUT 1,930 PROTECTED AREAS WITH 322 REPLICATIONS, COVERING OVER 50 COUNTRIES IN EUROPE, ASIA, AFRICA, LATIN AMERICA AND THE CARIBBEAN.

cultural etc.). Thus, all investments made in PAs should contribute to improve their effectiveness in conserving and securing the fulfillment of the objectives

of these areas. Assess whether protected area systems are being managed effectively is needed to continuously improve management and guide future investments. The RAPPAM method (Rapid Assessment and Prioritization of Protected Area Management) developed by the WWF Network in 2003 is among the most widely adopted assessment methods in the world.

RAPPAM has been applied 2,276 times in about 1,930 protected areas with 322 replications, covering over 50 countries in Europe, Asia, Africa, Latin America and the Caribbean.

It is aimed at providing decision makers and policy makers with simple information on trends and management aspects that enable them to achieve

better effectiveness in a system or group of PAs. Its application is based on questionnaires filled out by PA managers. RAPPAM contributes to:

- Identify management strengths and weaknesses
- Analyze the characteristics and distribution of the various threats and pressures
- Identify areas of high ecological and social importance and vulnerability issues
- Indicate the urgency and priorities for PA management and resource allocation
- Assist in the development and prioritization of policy interventions

See below the specific elements and modules addressed in RAPPAM:

Structure of the RAPPAM questionnaire

ELEMENT	MODULE	No. OF QUESTIONS	
	1	General information	15
	2	Pressures and threats	variable
CONTEXT			29
	3	Biological importance	10
	4	Socioeconomic importance	10
	5	Vulnerability	9
PLANNING			16
	6	Objectives	5
	7	Legal status	5
	8	Area design and planning	6
INPUT			22
	9	Human resources	5
	10	Communication and information	6
	11	Infrastructure	5
	12	Financial resources	6
PROCESSES			17
	13	Planning	5
	14	Decision-making	6
	15	Research, evaluation and monitoring	6
RESULTS	16	Results	12

HOW WAS THE RAPPAM METHOD APPLIED TO EVALUATE THE IMPACT OF THE ARPA PROGRAM?

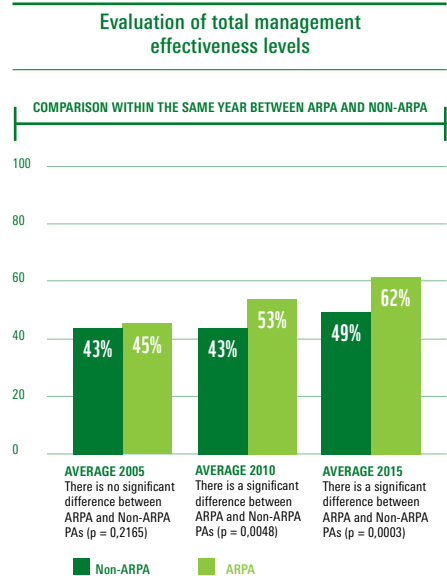


RAPPAM results were adopted to analyze the effect of ARPA in PA management effectiveness between 2005 and 2015, by comparing the group of federal PAs supported by the program (ARPA PAs) to the group that did not have such support (Non-ARPA PAs).

The performance of both groups were compared in terms of the overall management effectiveness and each module's evolution from 2005 to 2015 (Objectives; Legal status; Area design and planning; Human resources; Communication and information; Infrastructure; Financial resources; Planning; Decision-making; Research, evaluation and monitoring; and Results).

WHAT WERE THE STUDY FINDINGS?

The analysis of the temporal evolution of the two groups indicates that the investments, structuring and operational mechanisms of the ARPA Program had a significant impact on the overall Management Effectiveness results, as well as in the Financial Resources,



Infrastructure, Decision-making and Management Planning. Starting from similar levels, PAs supported by the program had a significantly better performance between 2005, 2010 and 2015 when compared to Non-ARPA areas.

Sample universe of "ARPA PAs" and "Non-ARPA PAs" per year

Group	2005		2010		2015	
	No. of PAs	Proportion (%)	No. of PAs	Proportion (%)	No. of PAs	Proportion (%)
ARPA	20	30%	43	53%	54	72%
Non-ARPA	46	70%	38	47%	21	28%
Total	66		81		75	

WHAT CONCLUSIONS CAN WE DRAW?

The positive results from the past 15 years represent a major indicator to all partners and donors who have invested time, technical capacity and financial resources in the Program. They also indicate the success that only long-term programs can achieve, overcoming political and institutional transitions, national and global financial crises, and all the challenges of managing and operating a program of this scale.

When it comes to RAPPAM results, it is important to see how ARPA stands out in some aspects due to the adoption of specific patterns and mechanisms, which have already been incorporated to the National System of Protected Areas. The ARPA model has also been seen as a reference for other countries – Buthan, Peru and Colombia are creating similar programs.

ARE THERE STILL ANY CHALLENGES?

ARPA needs to find ways to achieve more robust results in some areas, including management planning, participatory and shared management, establishment of partnerships and additional public resources. By increasing its management capacity, higher management effectiveness standards can be achieved (>60%), especially in Legal status, Planning, and Research, evaluation

and monitoring. In addition, the improvement in some management aspects, such as Human Resources and Legal Status, depends on a broader context that goes beyond the Program. The consolidation of the National System of Protected Areas as a whole should be a factor to be taken into account when designing the strategies of the Program to ensure the sustainability of the results achieved in the long term.

FINAL MESSAGE

Long-term investments in protected areas have proven to result in greater levels of management effectiveness, which in turn, make PAs more able to achieve their conservation objectives, providing society with a variety of goods and services essential for their well-being and income generation. It is essential to recognize the benefits that protected areas offer, so that the effort to support, politically and financially, initiatives such as ARPA is disseminated for other regions.

Beyond the financial support to PAs, which includes goods, services and infrastructure, ARPA program is investing in the sustainable development of the Amazon region through a decentralized and participatory approach, resulting in better social conditions for communities living inside and around PAs.

ARPA results demonstrate that the Program must be maintained to amplify its contributions to biodiversity conservation and social development.

Access the full study – The Impact of the ARPA Program on the Management Effectiveness of Amazon Protected Areas.



Partners de

KFW



Governos Estaduais da Amazônia Brasileira: **Acre, Amapá, Amazonas, Mato Grosso, Rondônia, Roraima, Pará e Tocantins**



MINISTÉRIO DO MEIO AMBIENTE

Produced by WWF Brasil and Funbio Text editing and graphic production
Caixa Alta – Birô de Comunicação / www.caixaaltabiro.com.br Design Bloco Gráfico
Translation BVaz Idiomas Printing Gráfica Athalaia